

Wikov is fully equipped for professional repairs of any brand wind turbine gearboxes. We can go even further. Our engineering competence is reflected in the high-end remanufacturing of your old wind

turbine gearbox. Remanufacturing by Wikov means reviewing the entire system and the contents within. Wikov upgrades your gearbox to withstand harsh conditions while reaching extended life.

Wind Turbine Gearbox Services

Multi-brand Professional Services for Wind Turbine Gearboxes



Wikov Manufacturing Facility

Contacts

Wikov Industry a.s.

City Tower

Hvezdova 1716/2b

140 78 Prague

Czech Republic

T: +420 244 016 863

M: +420 602 427 211

E: osoukup@wikov.com

www.wikov.com

EN1809

© Wikov Industry a.s. 2018



The Essence of Engineering

Factory Services

Gearbox refurbishments

| Root cause analysis; replacement of bearings, HSS, damaged geared parts, etc.; housings inspection; full load test

Gearbox upgrades & remanufacturing

| Integrated planet bearings; nitrided ring gears; lubrication system upgrades; material quality upgrades



Field Services

| Monitoring, Inspection & Diagnostics

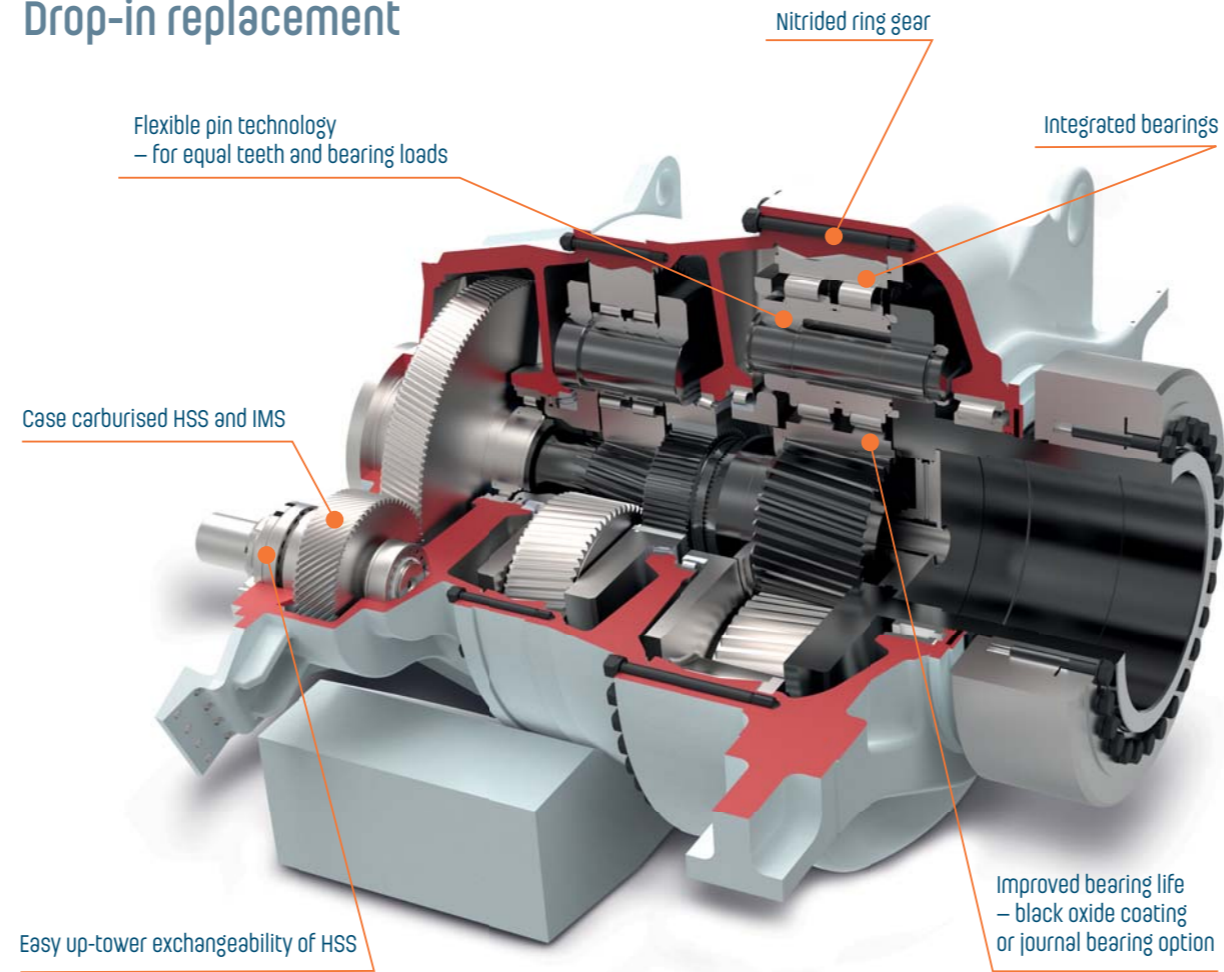
| HSS replacements

| Replacements of auxiliary components



Wind Turbine Gearbox Services

Drop-in replacement



Spares

| HSS, IMS, planet gear wheels

| Bearings

| Sensors

| Fittings & fasteners, seals

| Lubrication system parts



WiGuard®

| Remote Condition Monitoring System WiGuard®

| System specifically developed for gearbox application

| Remote full-scale diagnostics via web or mobile client

| Reduced maintenance and service costs



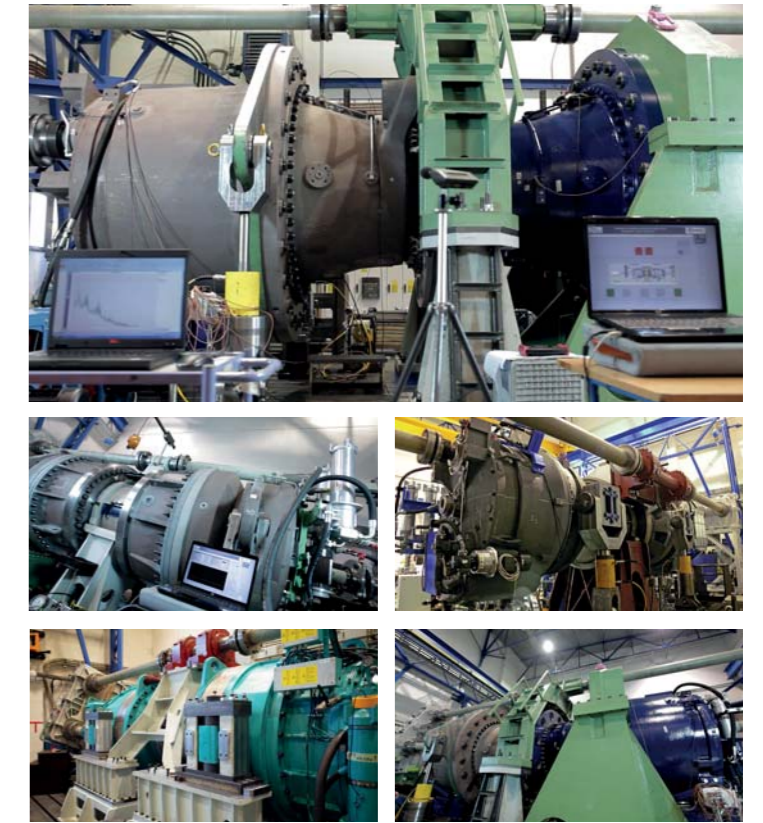
Testing

| Three load test stands

| Up to 8 MW

| Measurement of the oil pressure, temperature, vibration, noise

| Testing gearbox for Cold Climate Condition in cooling chamber



Vast experience through 500+ units in operation

Unique Flexible Pin technology on wind turbines since 1987

Integrated planet bearings since 1987

Journal planet bearings since 2007

Trouble - free operation of 1100 MW installed power onshore and offshore

Gearbox power range up to 10 MW+