

# Electrical design levels in Wikov Gear





## ELECTRICAL DESIGN LEVELS

# What information can we gather from electrical sensors on gearbox?

*Wikov uses sensors and other electrical equipment only from well proven manufacturers.*

*Our experts will recommend the best solution for specific gearbox application.*

*Explosion hazardous environment? Offshore application?*

*Mechanical damage risk?*

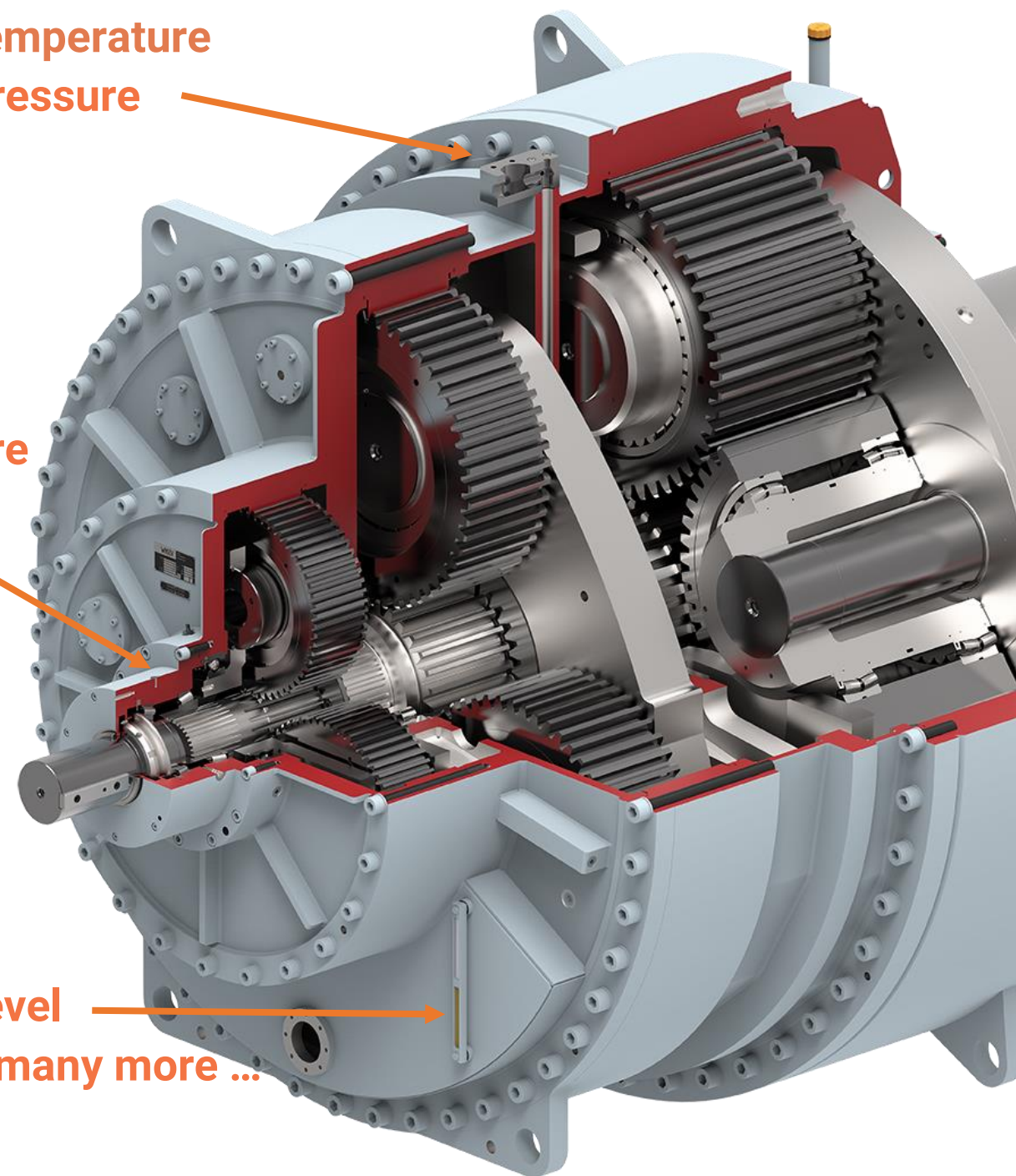
*Challenging ambient conditions?*

*Been there, done that!*

Oil temperature  
Oil pressure

Bearing temperature  
Vibration

Oil level  
and many more ...









# 1) Lite

Plain sensors

## 2) Standard

Basic protection & junction box

## 3) Standard EX

Basic protection & junction box for EX



## 4) EXtra

Increased mechanical protection

## 5) „Offshore“

Stainless steel



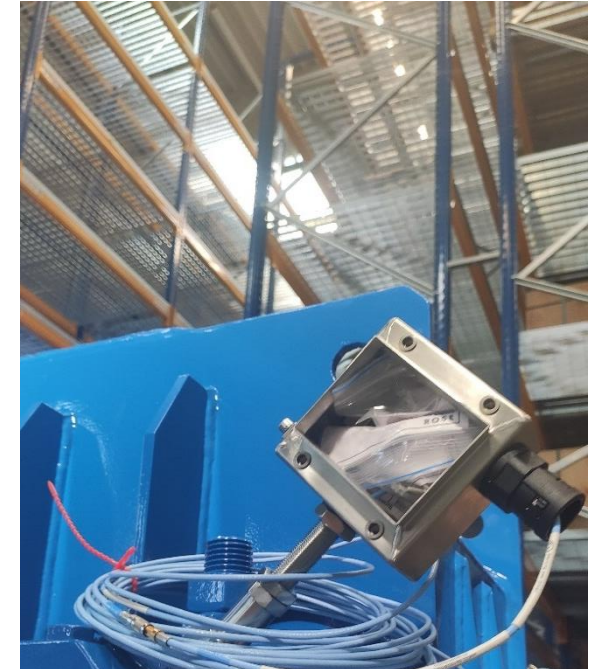
## 1) LITE

# Key features.

- Sensor cables are prepared for routing straight to customers parent system
- Solution suitable for confined spaces
- Low price



**No junction box**



**Agreed way of transition**



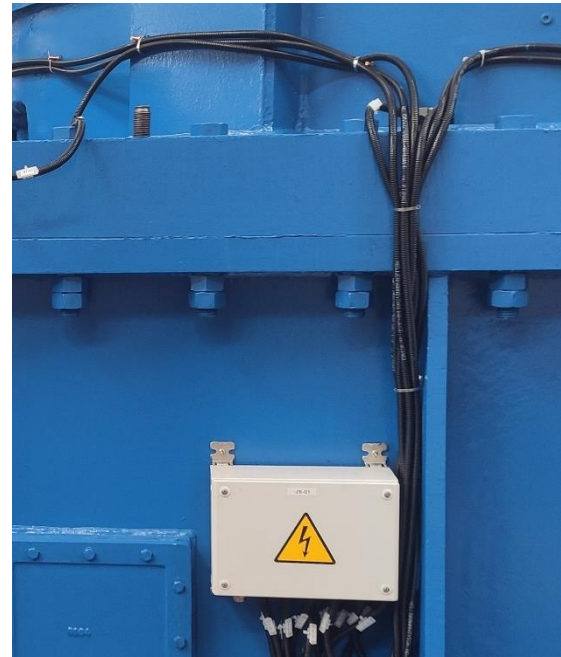
## 2) STANDARD

# Key features.

- Basic mechanical damage protection of cables
- Minimum ingress protection IP55
- Cost effective



**Metal junction box**



**Plastic cable tubes**



**Accessible surface mounted sensors**

### 3) STANDARD EX

## Key features.

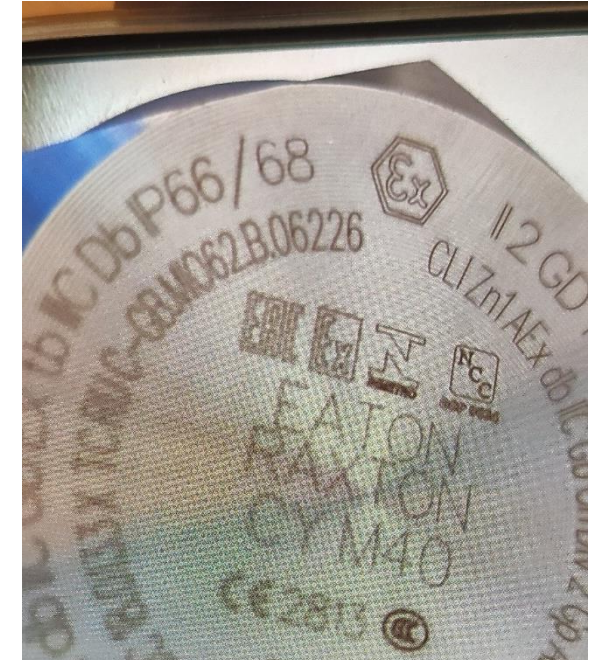
- Basic mechanical damage protection of cables
- Minimum ingress protection IP55
- Cost effective
- Certified for use in explosive hazardous atmosphere



**Junction box**



**Plastic cable tubes**



**EX Certified**



#### 4) EXTRA

## Key features.

- Significant mechanical damage protection of cables and sensors
- Minimum ingress protection IP66
- EX certification upon request



**Protected sensors**



**Rubber coated steel cable tubes**



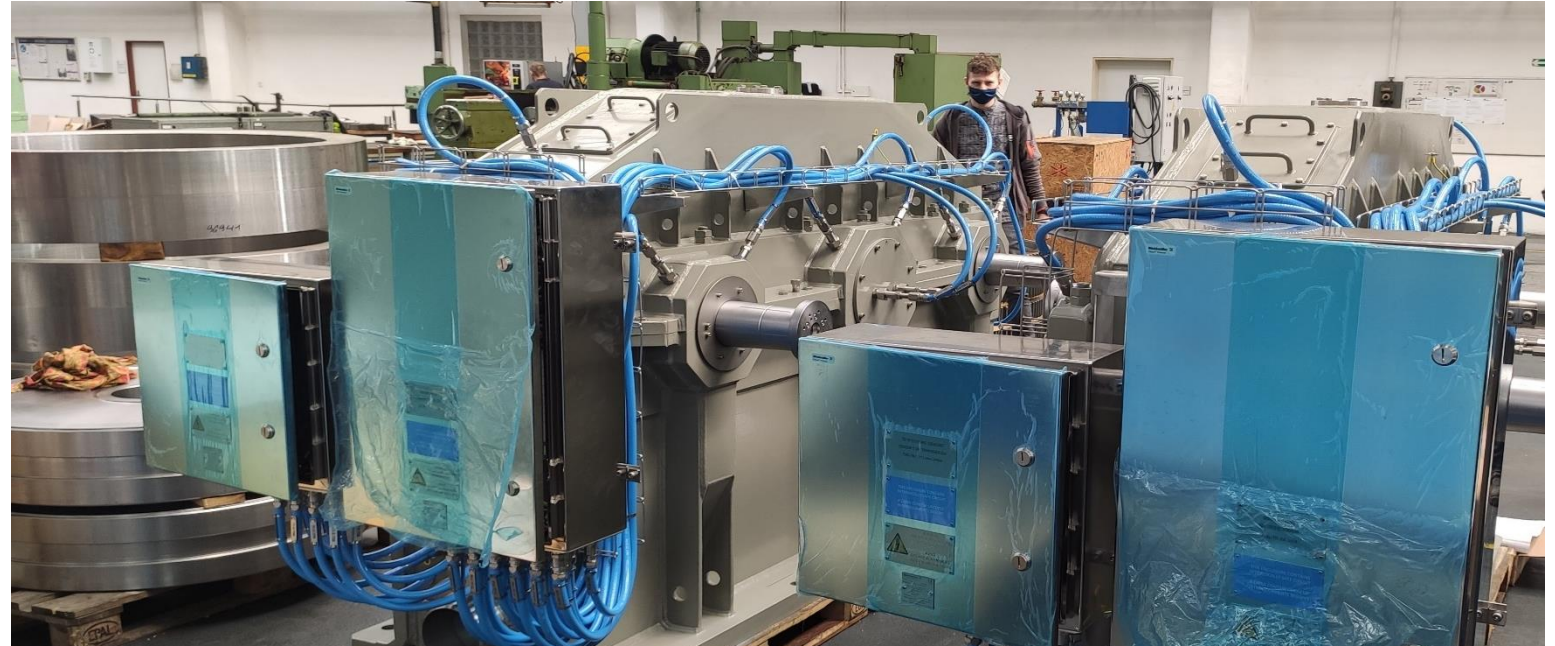
**Stainless steel junction box**



## 5) OFFSHORE

# Key features.

- Highest level of protection for the most challenging conditions
- Minimum ingress protection IP66
- Maximum use of stainless steel
- EX certification up to Zone 1, IIC



**In the air, on land and sea!**



# Contact



**Wikov Gear s.r.o.**

Tylova 1/57

316 00 Pilsen

Czech Republic

Tel.: +420 377 177 110

[gear@wikov.com](mailto:gear@wikov.com)