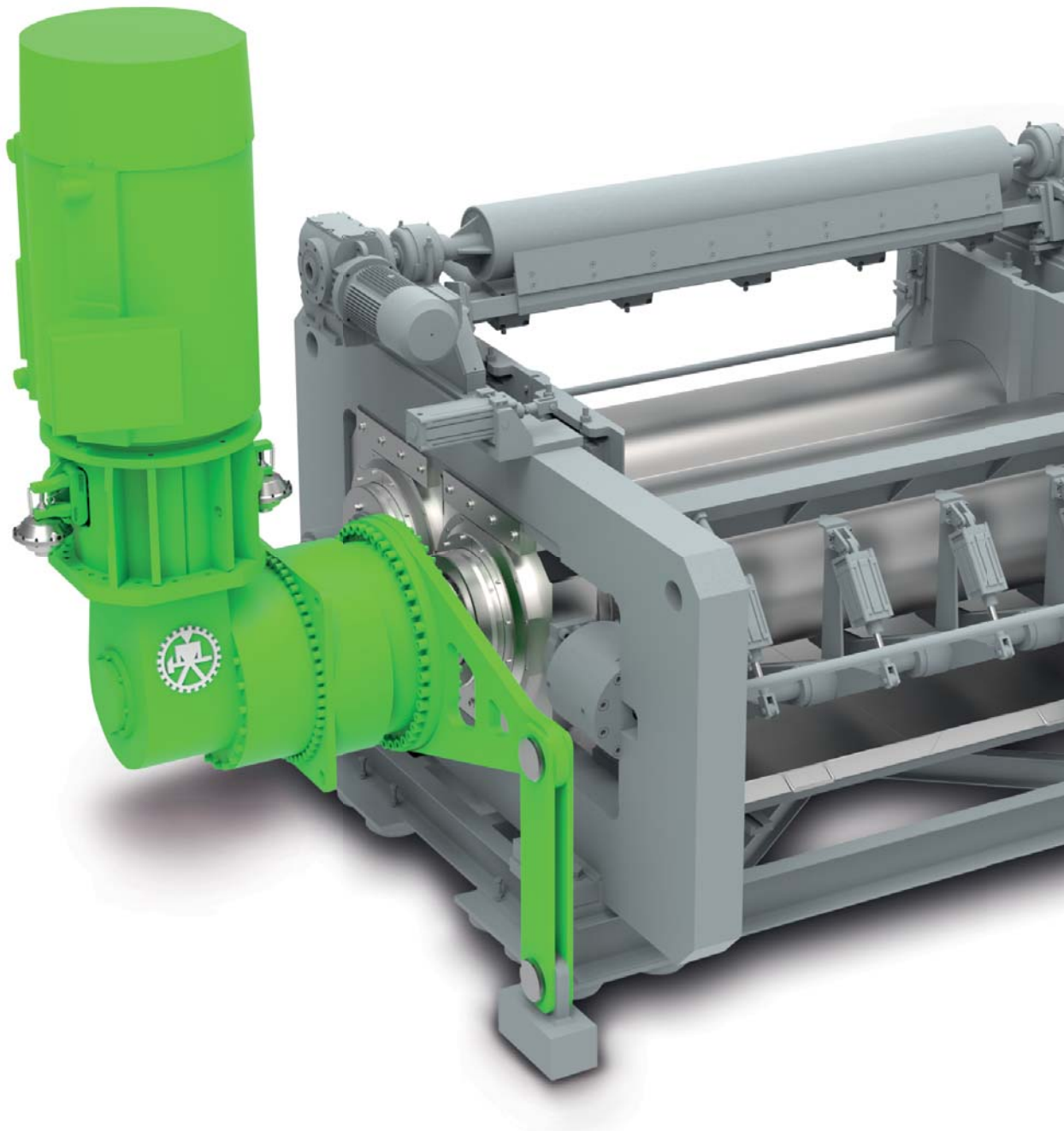


Orbi-flex[®] Gearboxes for Rubber Industry

Exceptional Planetary Gearboxes for Mixers, Two-roll Mills and Calenders

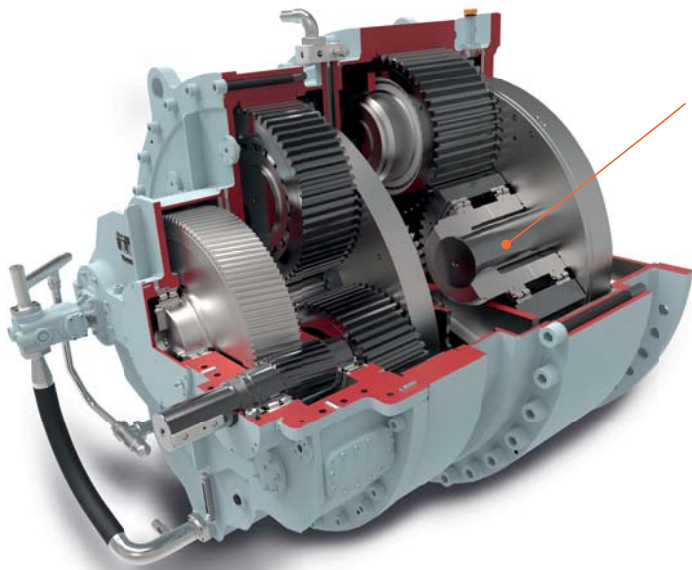


WIKOV

The Essence of Engineering

Orbi-flex® Gearboxes for Rubber Applications

Orbi-flex® planetary gear unit series represents a clever solution with excellent power to weight and size ratio. Gearbox durability is maintained at the same level or even increased while the overall size and weight are significantly reduced. Orbi-flex® planetary gear unit series is ready for rubber industry applications such as mixers, two-roll mills or calender. It is designed to maximally reduce operation costs and maintenance requirements while ensuring extended lifetime of the gearbox and minimize wear of gearbox internals.



Key Technical Features of the Orbi-flex® Gearbox

Flexible pin technology:

Multi-satellite arrangement Compact dimensions
High power density Better safety factors
Shock load resistance Optional overload stop

Orbi-flex® Gearboxes are designated for these Apps:

- | Mixers
- | Two-roll mills
- | Calenders

Your Benefits with Orbi-flex® Gearbox

Lower CAPEX - through lower weight
Lower OPEX - through higher efficiency
Space savings - through compact dimensions
Extended gearbox lifetime – through higher resistance against shock load conditions



Two-roll mill drive with Orbi-flex® gearbox



Helical-planetary Orbi-flex® gearbox for mixer

Contacts

Wikov MGI a.s.

Zbečnick 356, 549 31 Hronov, Czech Republic

T +420 491 488 111, F +420 491 488 412, E mgi@wikov.com, www.wikov.com

EN1702

© Wikov Industry a.s. 2017