

# Oil & Gas Industry Gearboxes

UPSTREAM TO DOWNSTREAM  
GEARBOXES

WIKOV.COM





01

## UPSTREAM & FPSO /LNG

- Top drives
- Drawworks
- Jack-up systems
- Pipe tensioners
- Compressor drives
- Fracking
- High-speed pump drives
- Mooring & anchor winches
- Gen-set drives
- Fire-fighting pump drives

02

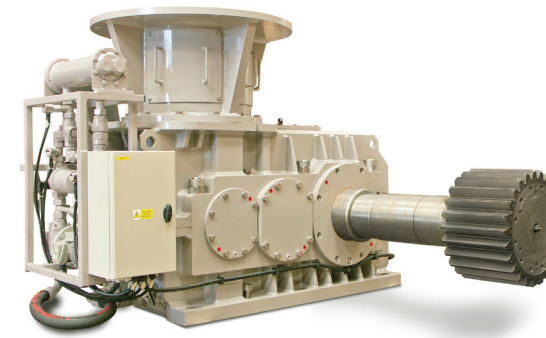
## MIDSTREAM

- High-speed pump drives
- Gears for propeller drives
- Compressor drives

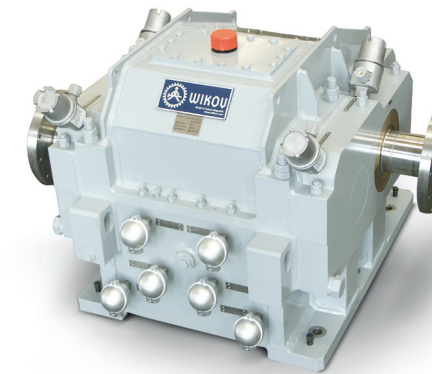
03

## DOWNSTREAM & FSRU

- Compressor drives
- Process pump drives
- Mooring & anchor winches
- Gen-set drives



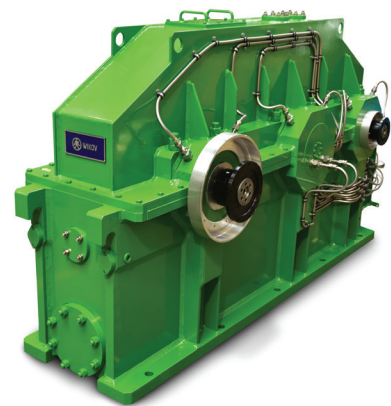
Anchor winch gearbox for the world's largest construction vessel Pioneering Spirit



High-speed pump drive gearbox

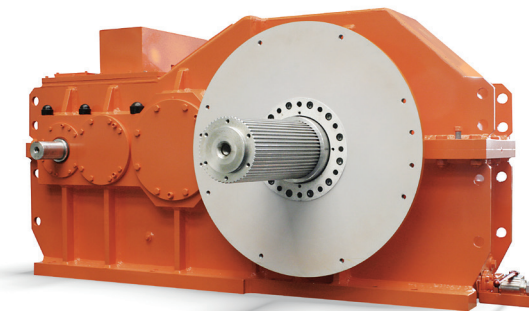
## WIKOV - THE ESSENCE OF ENGINEERING

- Tailored solutions
- Engineering competence
- Gear manufacturing tradition since 1918
- Manufacture to the latest international standards: ISO, DIN, AGMA, API and others
- State of the art machine tools
- Cutting edge gear inspection
- Dynamic test bench up to 35.000 rpm
- Third party certification: ABS, DNV, GL, BV and others
- Aftermarket services: repairs, preventative maintenance, inspections and overhauls, reverse engineering
- WiGuard® - Remote condition monitoring system

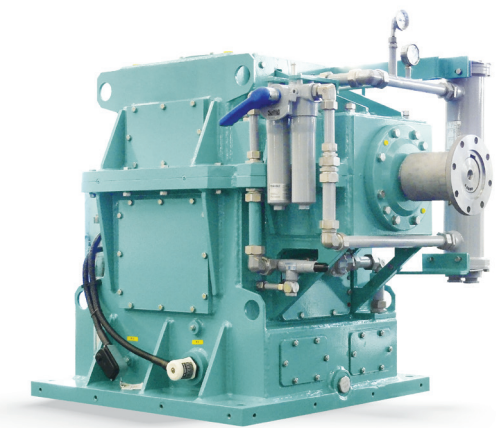


Screw compressor gearbox

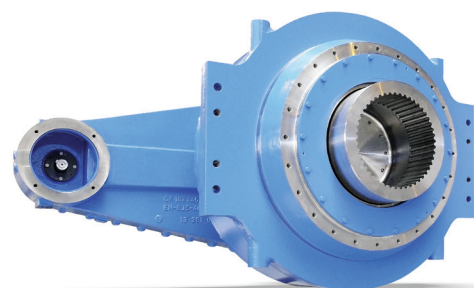
Time tested  
gearbox solutions  
for onshore  
and offshore  
applications of oil  
& gas industry



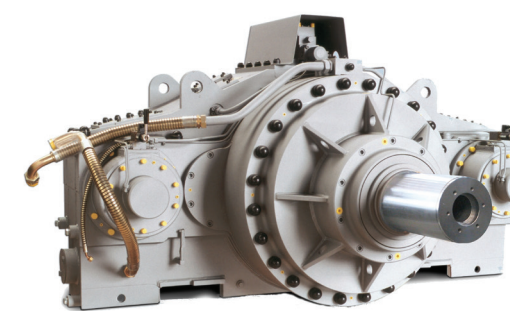
Rigbox gear unit



Fire-fighting pump gearbox



Jack-up gearbox

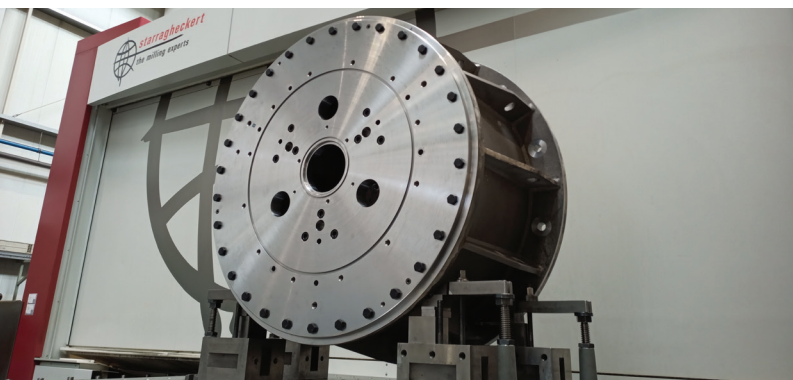


Anchor winch gearbox



Fracking planetary pump gearbox





Wikov MGI a.s.  
Zbečnick 356  
549 31 Hronov  
Czech Republic  
T: +420 491 488 111  
F: +420 491 488 412

E: [mgi@wikov.com](mailto:mgi@wikov.com)  
[www.wikov.com](http://www.wikov.com)

Wikov Gear s.r.o.  
Tylova 1/57  
316 00 Pilsen  
Czech Republic  
T: +420 377 177 110  
F: +420 377 177 119

E: [gear@wikov.com](mailto:gear@wikov.com)  
[www.wikov.com](http://www.wikov.com)

# Wikov Manufacturing Facility

Wikov prides itself for offering a wide range of gear units and drives. We offer standardized gearboxes and excel in customized solutions that meet your needs entirely and bring you reliable products with minimized total cost of ownership. Our success is based on the experience we have gained over our near 140-year history, engineering flexibility through our own R&D team and efficient machine tools. These three pillars lead to identifying the best solution for you with maximizing functional and economical parameters of your drive.



The Essence of Engineering

