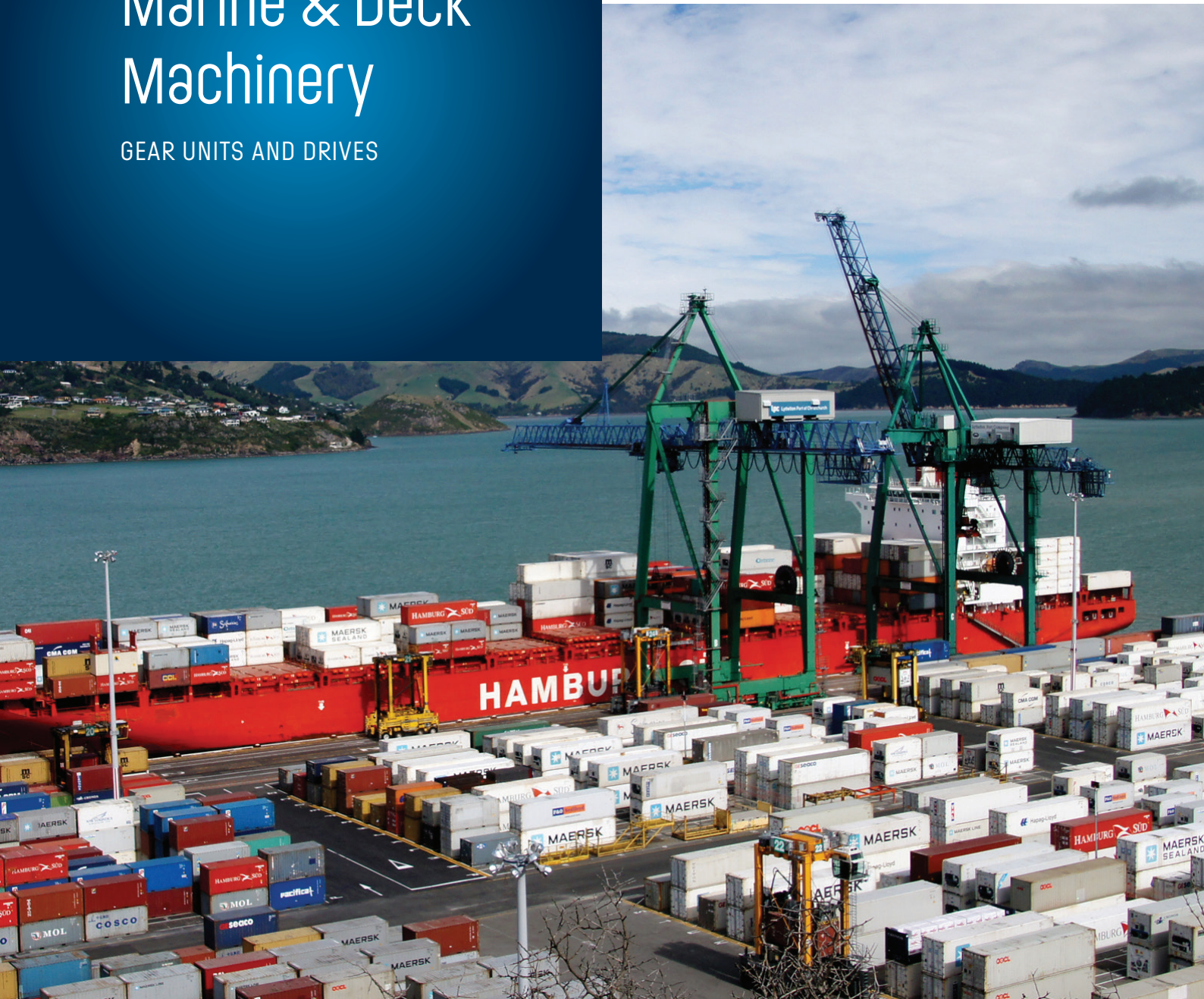


WIKOV.COM

# Marine & Deck Machinery

GEAR UNITS AND DRIVES



WIKOV



01

## DECK MACHINERY

- Mooring and anchor winches
- AHTS winches
- Trawl winches for fishing vessels
- Jack-up drives
- Pipe tensioners drives

02

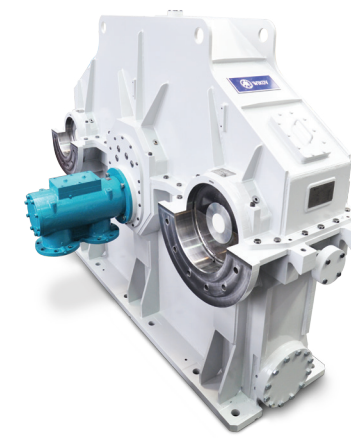
## DRILLING RIGS AND FPSO VESSELS

- Mooring and anchor winches
- Jack-up drives
- Drawworks and top drives

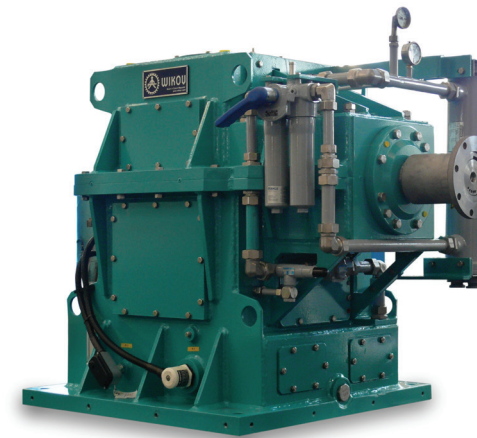
03

## OTHERS

- Propeller drives
- Dredge pumps
- Fire-fighting pumps
- High-speed gearboxes for compressor drive
- High-speed gearboxes for steam/gas turbines
- Gensets
- Desalination pumps
- Screw-type ship unloader drive



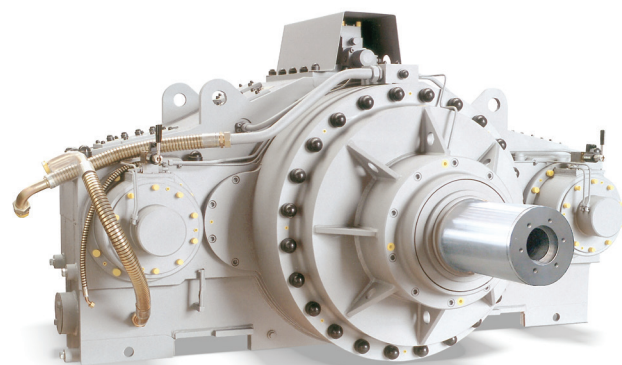
Compressor high-speed gear unit



Fire-fighting pump gearbox

## WIKOV - THE ESSENCE OF ENGINEERING

- Tailored solutions
- Engineering competence
- Gear manufacturing tradition since 1918
- Manufacture to the latest international standards: ISO, DIN, AGMA, API and others
- State of the art machine tools
- Cutting edge gear inspection
- Dynamic test bench up to 35.000 rpm
- Third party certification: ABS, DNV, GL, BV and others
- Aftermarket services: repairs, preventative maintenance, inspections and overhauls, reverse engineering
- WiGuard® - Remote condition monitoring system



AHTS winch gearbox

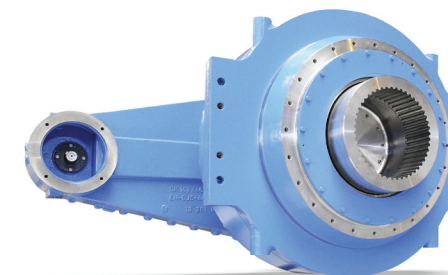
Field proven  
extensive portfolio  
of standard, special  
and high-speed  
gear units and  
drives for harsh  
conditons  
of marine industry.



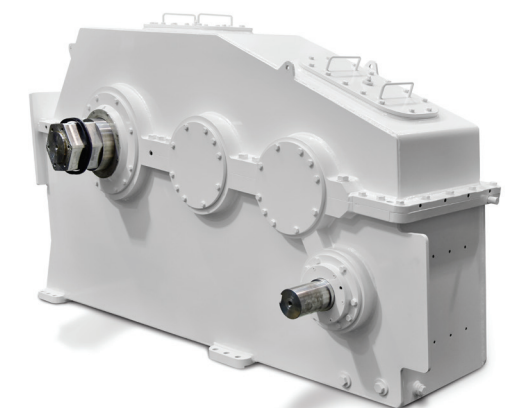
Gearbox for screw-type bulk material unloader



Ship propeller gearbox



Jack-up planetary gearbox

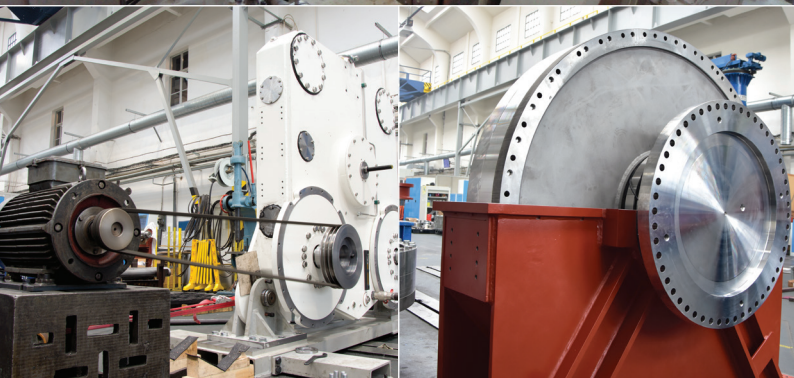
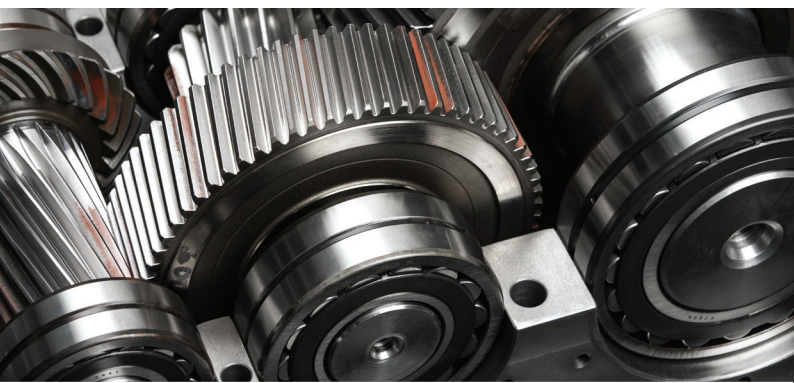


Trawl winch gear unit for fishing vessel



Anchor winch gearbox for the world's  
largest construction vessel Pioneering Spirit





Wikov MGI a.s.  
Zbečník 356  
549 31 Hronov  
Czech Republic  
T: +420 491 488 111  
F: +420 491 488 412

E: [mgi@wikov.com](mailto:mgi@wikov.com)  
[www.wikov.com](http://www.wikov.com)

# Wikov Manufacturing Facility

Wikov prides itself for offering a wide range of gear units and drives. We offer standardized gearboxes and excel in customized solutions that meet your needs entirely and bring you reliable products with minimized total cost of ownership. Our success is based on the experience we have gained over our near 140-year history, engineering flexibility through own R&D team and efficient machine tools. These three pillars lead to identifying the best solution for you with maximizing functional and economical parameters of your drive.



The Essence of Engineering

